

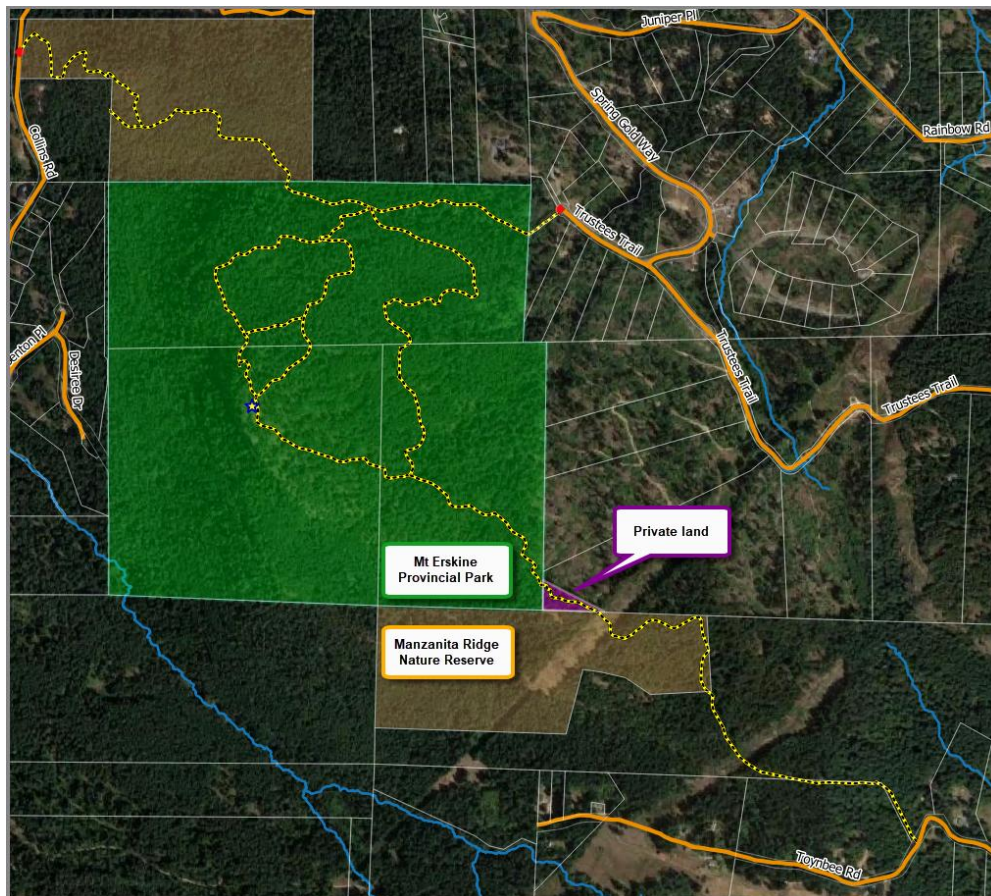
Acquiring Mt. Erskine's Missing Link

The Background

In 2003 the Salt Spring Island Conservancy acquired the 50-acre Manzanita Ridge Nature Reserve from Martin Williams. Martin wanted to protect the old growth trees on his 160-acre forest lot and also to provide walkers with a forest trail that would connect Toynbee and Collins Roads.

Two years later, in 2005, the Conservancy fundraised in order to buy the centrepiece of Mt. Erskine Provincial Park in partnership with BC Parks and the Nature Conservancy of Canada. What wasn't realized at the time was that the trail connection between Manzanita Ridge and the provincial park crosses a piece of private property. This is the land that BC Parks wants to acquire now (purple triangle in map below).

If this property is developed and a house built over the existing trail, we will no longer have a connection between Manzanita Ridge and Mt. Erskine Provincial Park, as the adjacent land is too steep for a safe trail.



The addition of this land to Mt. Erskine Provincial Park would secure public access to the corridor from the park to Manzanita Ridge Nature Reserve, which in turn would secure the trail connection between Collins Road and Toynbee Road for public use. Just as important, the addition of this piece of land would provide the park with several additional beautiful viewpoints and potential picnic sites. As a trail already exists on this piece of land, no new trail construction would be required.



What We Need

This acquisition is included as one of the goals in the management plan for Mt. Erskine Provincial Park. The BC Parks Foundation is the organization receiving donations and providing tax receipts. To acquire this land we must raise \$243,000 by the end of January.

Please make your donation by:

- mail to BC Parks Foundation, #1550—625 Howe Street, Vancouver, BC V6C 2T6
- credit card or ACH payment @ : <https://bcparksfoundation.ca/projects/enhance/mount-erskine-park/>
- calling or emailing at 604-343-3975 or gifts@bcparksfoundation.ca.

In all cases, be sure to specify that the donation is for “Mt Erskine Park Trail Connection Fundraiser” and include your contact information for charitable receipting.

Generations to come will thank us for ensuring that these two beautiful pieces of land stay connected.